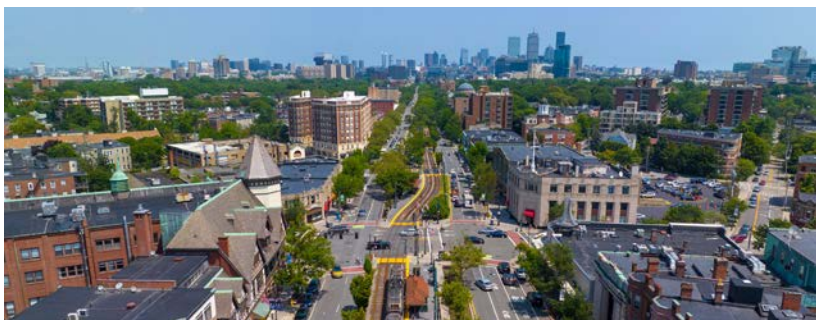
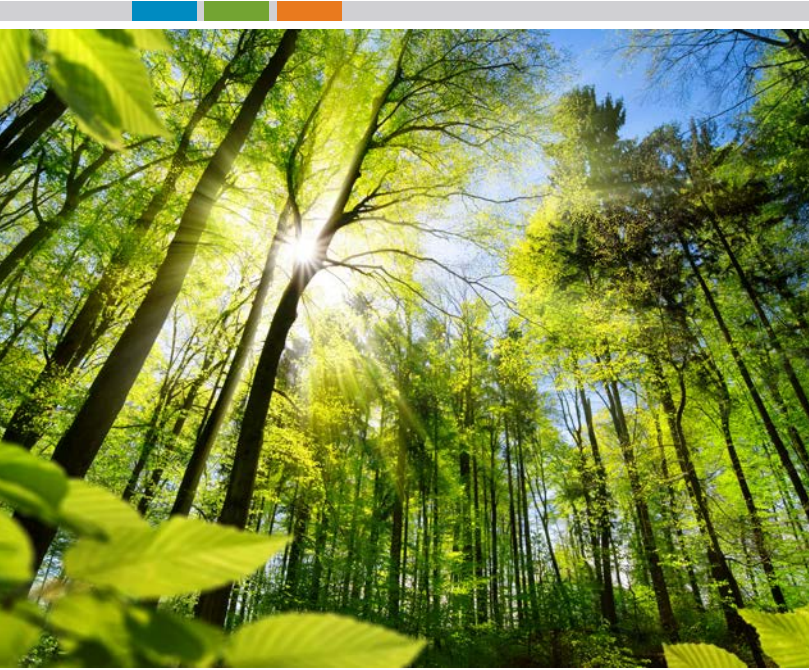


Shaping a safe, sustainable, and equitable future.

Water • Environmental • Health & Safety • Compliance & Assurance • Infrastructure



apexc.com





Award-Winning Engineering and Environmental Solutions

Apex delivers award-winning due diligence; multi-media environmental assessment, permitting, and remediation; engineering; regulatory compliance; water resource management; risk management; industrial hygiene, occupational health and workplace safety; and sustainability services.

Mid-Sized Firm. Maximum Results.

You deserve exceptional talent. We have it. We attract and retain the best talent in the industry. With professionals spanning geologists, hydrogeologists, air quality specialists, safety professionals, ergonomists, environmental scientists, geoscientists, remediation experts, engineers, industrial hygienists, and field technicians, we offer a unique combination of environmental, health, and safety (EHS) consulting and project management capabilities. More importantly, our team combines the client commitment, reliability, and responsiveness smaller firms are known for with the depth and breadth of services you'd expect from a larger firm. At Apex, we deliver the results you need at a price you can afford.

Why Apex?

We prioritize client satisfaction. It's reflected in our mission statement and rooted in our culture. But it's more than our exceptional service and technical excellence that differentiates us from other firms. At Apex, we view environmental, health and safety and sustainability challenges through a business context.

We Listen

"Begin with the end in mind" summarizes our approach. We take time to fully understand what you want to achieve to ensure we deliver what you need. Our focus is on your business. We tailor our approach accordingly and evaluate every regulatory requirement, facility, and site individually to determine the best outcomes. By doing so, we provide the most expedient, cost-effective, and efficient solutions possible.

We Turn Information into Insight

We raise the bar for environmental information management systems. We help you move from reactive or corrective actions to proactive planning and decision-making. Our ARTEMIS® solution can help you track, manage, schedule, and maintain your assets; achieve compliance; mitigate your risk; and improve your operational performance. Pair this with our analytical and statistical expertise and you can synthesize, analyze, and visualize your data to avoid project setbacks and cut costs.

We Deliver

- Comprehensive, turnkey services
- Clear strategies to obtain regulatory closure quickly
- Innovative technologies and solutions
- Practical, efficient, creative professionals
- 24/7 responsiveness
- Access to our executives for critical matters
- Commitment to quality, safety, and results
- Rapid emergency response using Incident Command System protocol
- Proven techniques to drive efficiencies

Simply stated, we reduce environmental risk and turn liabilities into assets—all in the shortest amount of time and for the least possible cost.

You Benefit

Our comprehensive services create sustainable savings:

- Investigating, assessing, and validating your needs
- Implementing, operating, and maintaining the best solutions available
- Tracking, monitoring, and reporting to help you achieve regulatory compliance and a return on your investment

Water

Apex is a recognized leader in the water space. Working across all aspects of water design, engineering and maintenance, we provide solutions to assist our clients with all aspects of water management.



Sustainable Solutions for Today's Water Challenges

Planning, Design, and Resiliency Solutions

- Assessment
- Construction inspection
- Design and engineering
- Regulatory compliance
- Stabilization
- Modeling

Stormwater Management Solutions

- Permitting and compliance
- Construction services
- Assessment, maintenance, and repair
- Innovative data management

Wastewater Management Solutions

- Design and installation
- Treatability studies
- Zero discharge closed loop evaluations
- Water usage reduction audits
- Wastewater audits for reduction in O&M costs

- Permitted wastewater discharge compliance
- Wastewater chemical dosing benchtop testing
- Existing monitoring and telemetry systems upgrades
- Existing control systems upgrades
- O&M and manual preparation
- Wastewater treatment system operator training
- pH and ORP probe calibration

Water Supply Solutions

- Analysis and optimization
- Capital improvements
- Cross connection
- Groundwater supply
- Operations and maintenance
- Water quality testing

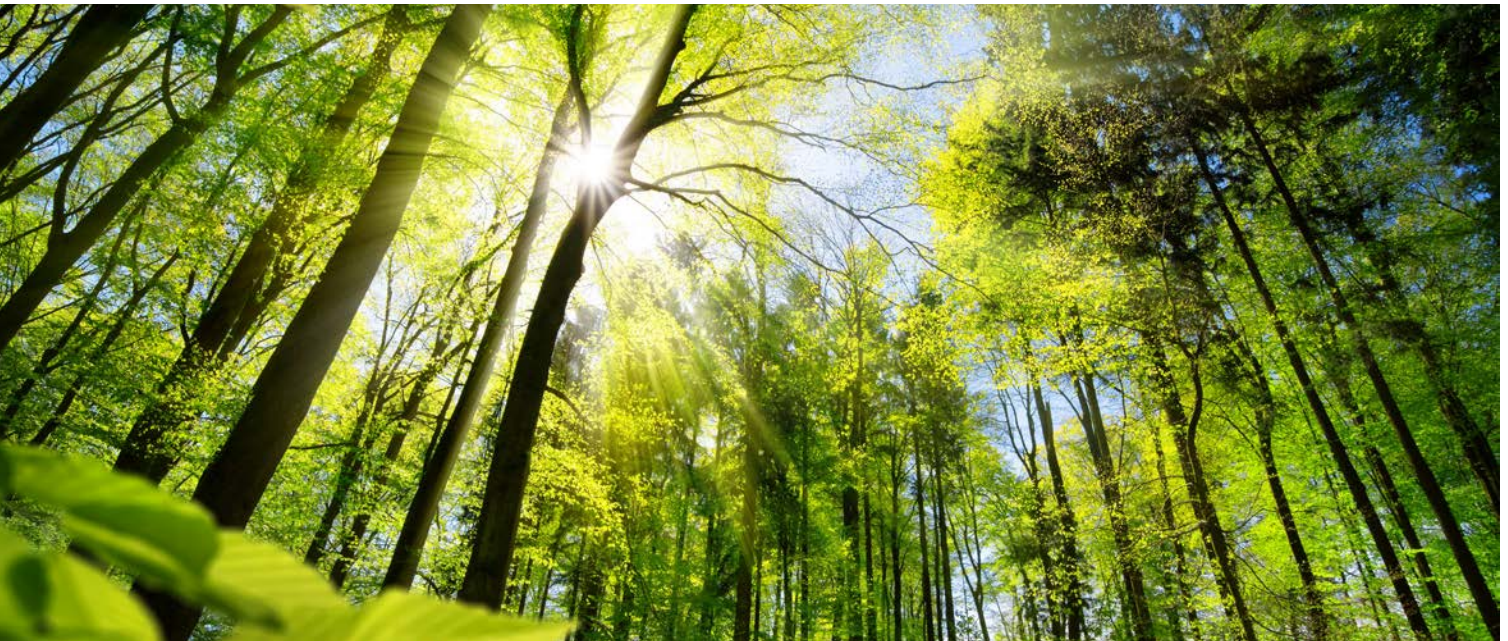
Water Resources Solutions

- Integrated water supply planning/management
- Watershed management



Environmental

Environmental liabilities top the list of some of the costliest, and often preventable risks to a company's bottom line. Apex offers a full range of environmental solutions—from due diligence to remediation and natural resources—we can support your projects from concept to closure.



Innovative Solutions for Complex Challenges

Due Diligence/Assessment Solutions

- Identify recognized environmental conditions (RECs), environmental impacts, and areas of financial liability
- Vapor encroachment and risk intrusion
- Negotiate indemnifications and price reductions
- Securing environmental insurance products
- Remediation course of action and cost estimation
- Bank-approved ASTM 1527-21 compliance
- Property condition assessments (PCAs)
- Limited compliance assessments (LCAs)
- Non-ASTM scope items
- Phase I and II environmental site assessments (ESAs)
- Recommendations based on results
- Probabilistic analysis of environmental liabilities

Natural Resources Solutions

- NEPA regulatory services
- Threatened and endangered species studies
- USFWS Section 7 & 10 consultation support
- Migratory Bird Treaty Act (MBTA) compliance
- Wetland delineation and Section 401/402/404 permitting
- Phase I, II, and III archeological and historical resource investigations
- National Historic Preservation Act Section (NHPA) Section 106 coordination for federal actions
- Historic standing structures assessment
- Cultural resources management plans (CRMP)
- Mitigation planning
- Construction monitoring

Emergency Response Solutions

- Pre-event assistance
- Water damage assessments, moisture mapping
- Asbestos and mold identification and abatement
- Re-occupancy indoor air quality sampling, testing, and monitoring
- Risk management
- Business continuity
- Facility water sampling and analyses
- Stormwater and wastewater treatment system evaluations
- Hazardous evaluations, containment, and mitigation
- Remediation management

Remediation Solutions

- Major CERCLA (Superfund) sites
- Underground storage tanks (USTs) and above ground storage tanks (ASTs)
- Landfills
- Brownfield redevelopment
- Volatile organic compound (VOC) remedial technologies
- In-situ chemical oxidation (ISCO)
- Enhanced in-situ bioremediation (EISB)
- In-situ chemical reduction (ISCR)
- Monitored natural attenuation (MNA)
- Chlorinated solvents in fractured bedrock
- PCB-laden sediment
- PFAS

Storage Tank Solutions

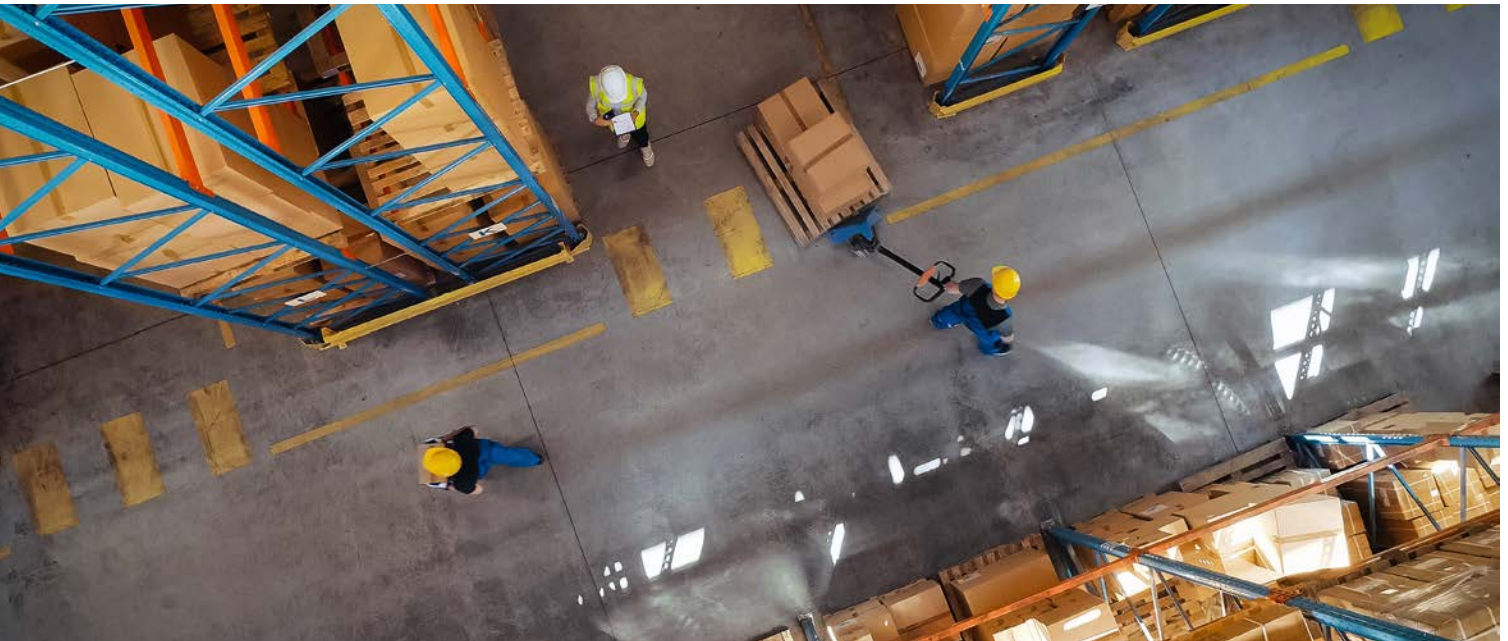
- Compliance testing
- Installation, removal, and replacement
- Release investigation and spill prevention planning
- Remediation
- Design and permitting
- Integrity testing and fit-for-service evaluations
- STI-SP001 certified inspectors





Health & Safety

Health and safety is a core competency and something we live and breathe on a daily basis. Since our inception in 1988, when Apex was founded by two Certified Industrial Hygienists, to today, we have always supported our client's most routine and challenging occupational health needs.



Protecting Your Workforce and Workplace

Industrial Hygiene Solutions

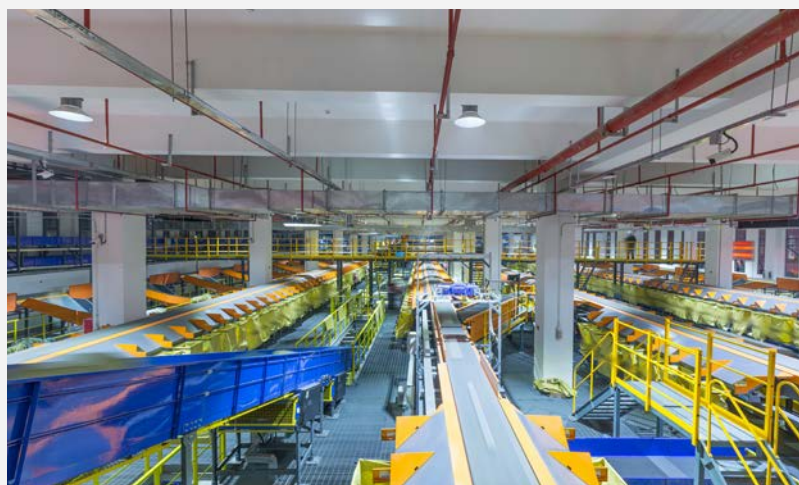
- Qualitative risk exposure assessments
- Health hazard evaluations
- On-site evaluations
- Exposure risk estimation
- Sampling plan development
- Chemical agent sampling, analyses, and result interpretation
- Physical agent measurement and result interpretation
- Biological agent sampling and result interpretation
- Turnkey asbestos, lead, and mold/moisture solutions
- Water damage and building moisture mapping
- Indoor air quality (IAQ) assessments
- Legionella and other waterborne pathogens assessment and management
- Building hazardous materials management
- Vapor intrusion assessment and turnkey mitigation
- Infectious agent control plans
- Contamination protocol reviews
- Tailored guidance communications
- Virtual health and safety training
- Process conformance evaluations
- Dust hazard analysis
- Wildfire smoke evaluations
- Post-disaster recovery support

Workplace Safety Solutions

- Hazard identification
- PPE
- Machine guarding
- Lockout/tagout
- Fall protection
- Confined space entry
- Slip/trip/fall prevention
- Organizational safety culture consulting and behavior-based safety
- Hazard communication
- Participatory ergonomics/ergonomics teams and committees

Ergonomics Solutions

- Ergonomics assessments and customized solutions
- Virtual home workstation ergonomic evaluations
- Program evaluation and development
- Ergonomics design
- Training
- Supplemental staffing
- Deep dive injury analyses of OSHA accident records or workers compensation claims
- Return to work and disability case management
- Risk mapping
- Digital human modeling
- Approved products list development
- Safe patient handling
- Integrated micro-break and educational software
- Physical demand analysis
- Stretching programs
- Body mechanics and postural coaching
- Management consulting (strategic business advising)





Compliance & Assurance

Our environmental, health, and regulatory compliance solutions enable clients to identify and manage risk, develop corrective actions and management plans, and minimize EHS risk to human health and the environment.



Environmental Excellence in Action

Permitting, Planning, and Licensing Solutions

- Hazardous and regulated waste management
- Biennial Resource Conservation and Recovery Act (RCRA) permitting
- EPCRA Tier I and II reporting and TRI reporting
- TSCA Section 8(a) CDR reporting

Auditing and Regulatory Compliance Solutions

- Comprehensive EHS auditing and programmatic gap assessments
- Client and industry standard conformance assessments
- Program and plan development, permitting, and reporting





Air Compliance and Permitting Solutions

- Air dispersion modeling
- Air emission calculations
- Air emissions inventory
- Air sampling
- Annual emissions reporting
- Best available control technology determinations (BACT)
- Greenhouse gas emission inventory
- Leak detection and repair (LDAR)
- Litigation support and agency negotiation
- Meteorological studies
- Stack testing, contracting, and oversight

Management Systems Solutions

- Design and support for system frameworks including:
 - Discovery workshops and gap assessments
 - Consulting and program development
 - Audits and training
 - Implementation support
 - Document management support
 - Internal audits
- Expertise in the following standards: ISO 9001, 14001, 45001, FSSC 22000, ISO 22000, SMETA, Responsible Care, and ASI

Sustainability and ESG Solutions

- Climate scenario planning
- ESG and sustainability data management
- Green bond issuance support
- Greenhouse gas (GHG) verification and assurance
- Baseline program review
- Materiality assessment and program design
- GHG LCA verification
- World Gold Council Conflict-Free Gold Standard®
- Zero waste to landfill
- Global real estate sustainability benchmark (GRESB)
- Health and safety metrics
- Social metrics
- Environmental metrics
- Workplace assessment for safety and hygiene (WASH)

EHS Audit and Compliance Solutions

- EHS Compliance Audits
- COVID-19 National Emphasis Program Audits
- EHS Program Development
- EHS Training



Infrastructure

Apex is a recognized leader in infrastructure, delivering projects across water, transportation, and construction market sectors. We provide best-in-class solutions to deliver sustainable, green infrastructure to our broad client base nationwide.



Ensuring Inclusive and Sustainable Growth

On August 2, 2021 Apex Companies announced the acquisition of Boston-based environmental and engineering firm, Environmental Partners (EP), expanding our multi-disciplinary engineering and consulting resources capabilities in water, environmental, transportation, and more. Headquartered in Quincy, MA and with three regional offices in the northeast, EP brings Apex more than 80 professionals with expertise in drinking water, wastewater, civil engineering, construction management, planning, transportation, owner's project management, and infrastructure asset management.

Recognized by Zweig as one of "the 100 fastest-growing architecture, engineering, planning, and environmental consulting firms in the United States and Canada" in 2016, 2017, 2018, and 2019, EP's award-winning approach and project list is impressive. We invite you to learn more about the EP team's deep expertise in both the private and municipal markets, their history of growth, and how we can better support your next project!

Civil Engineering

- Site/civil engineering
- Drainage design
- Peer reviews

Infrastructure Asset Management

- ADA compliance and complete streets assessments
- GIS platform development (design, implementation, and training)
- Pavement management
- Sign inventory and MUTCD compliance
- Water, sewer, and drainage system cataloging and mapping

Landfill Engineering and Waste Management

- Landfill design, compliance reporting, and remediation
- Waste management engineering

Traffic and Transportation

- Complete streets planning and design
- Corridor improvements
- Highway engineering
- Intersection improvements
- Roundabouts
- Traffic calming
- Traffic engineering
- Traffic signals

Construction Management

- Owner's representative services/construction management oversight
- Inspection, oversight, and documentation
- Underground and above ground storage tank (UST/AST) services
- Stormwater tank and structure design, installation, and management
- Related construction

Geotechnical Engineering

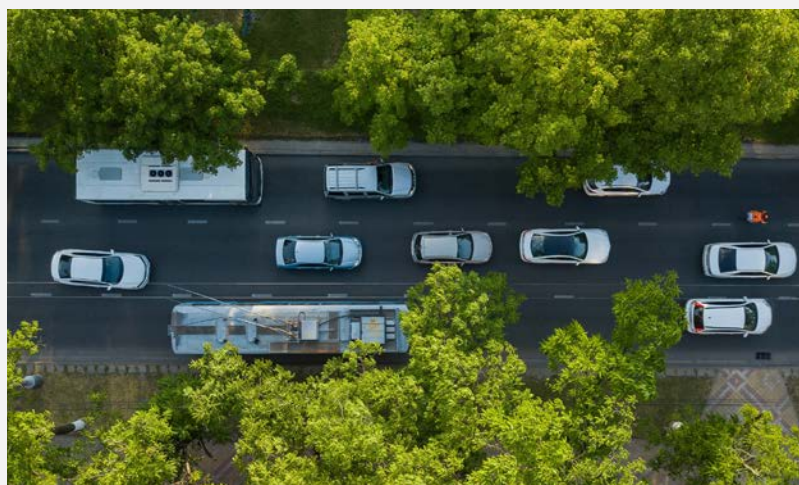
- Subsurface investigations
- Soil and rock core sampling and identification
- Drilling contracting and boring schedules
- Prepare detailed (lithologic) descriptions
- Environmental and earthwork considerations and evaluations
- Slope stability, reinforcement, and retaining walls
- Deep excavations
- Foundation recommendations and design
- Dam design and stability
- Forensic analysis
- Ground improvement methods
- Geosynthetics

Civil Engineering Laboratory Services

- Civil engineering laboratory support services for the MidAtlantic
- Concrete and Grout Testing
- On-Site Field Testing

Surveying and Mapping Services

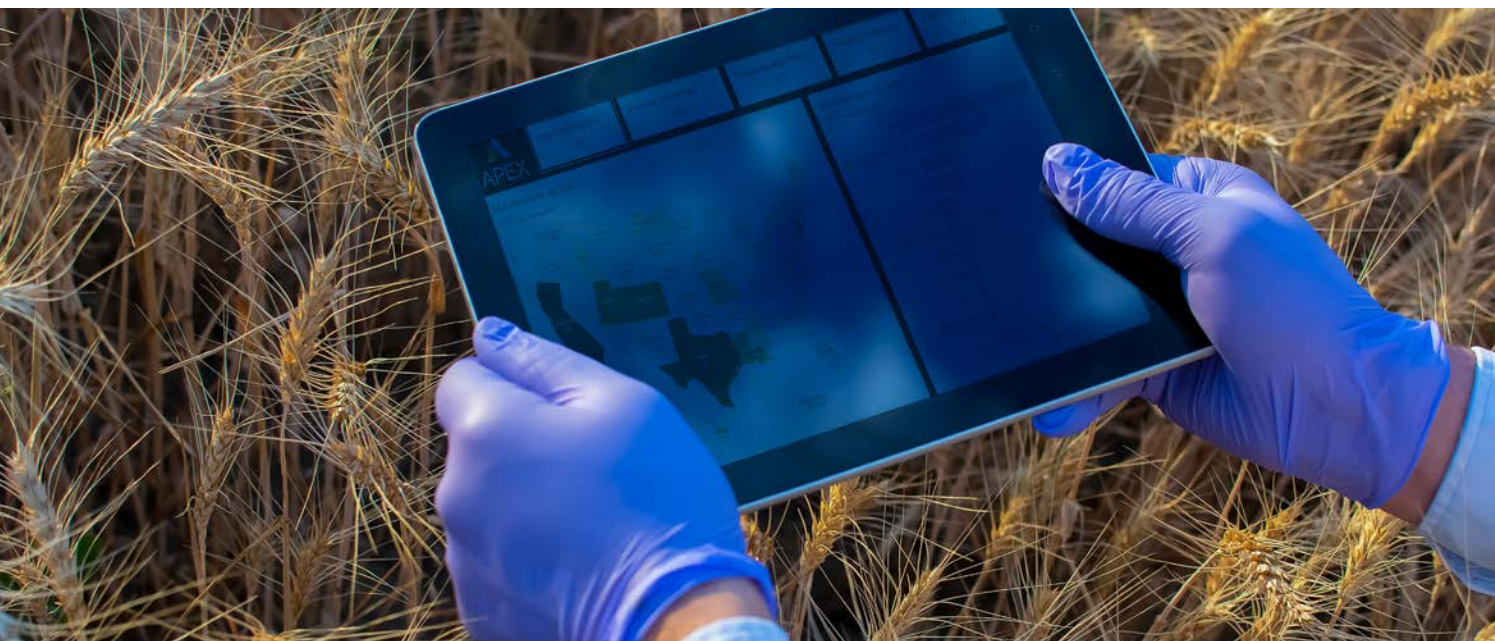
- UAV and drone surveying
- 3D modeling





ARTEMIS®

ARTEMIS® stands for Apex Real Time Environmental Management Information System. It is Apex's solution for capturing and managing critical environmental and ESG data, to support your regulatory compliance and related business goals.



Your data has a story to tell. Are you listening?

ARTEMIS® helps you capture, visualize and manage your environmental and ESG data to support compliant, reliable and efficient business practices, and make informed decisions using real-time data. The desktop and mobile features facilitate 24/7 access in the office, at home, or in the field. ARTEMIS® not only saves you time and money, but reduces error rates, mitigates risks and helps maintain business continuity.

Explore the Benefits of ARTEMIS®

Streamline and Enhance Compliance

With flexible mobile field data collection tools, a configurable compliance calendar, and centralized cloud-based information management, ARTEMIS® is a cost effective and proactive strategy to streamline your environmental program. Real time dashboards ensure that you don't miss a deadline, and automatic notifications help you monitor issues as they arise, eliminating unwelcome surprises.



Shift from Reactive to Proactive

ARTEMIS® can help you move from reactive to proactive decision making, from backward-looking data to forward-looking insight—using real-time data to minimize risk, manage cost, and optimize operational performance.

Reduce Risk; Leverage Opportunities

ARTEMIS® takes your data out of spreadsheets and transforms them into meaningful dashboards and graphics to empower your team to pinpoint areas of risk and to leverage opportunities.

Eliminate Silos

With your facility and asset data in one system, ARTEMIS® helps to facilitate communication across your network, promoting the development of best practices that can be replicated at an enterprise level, reducing rework and costly trial and error scenarios.

Rapid Implementation

Using ARTEMIS® removes the need to invest in hardware, software, and specialized labor to implement an enterprise-wide system. Also, it provides digital data collection for real time reporting with a short implementation period.

Applications

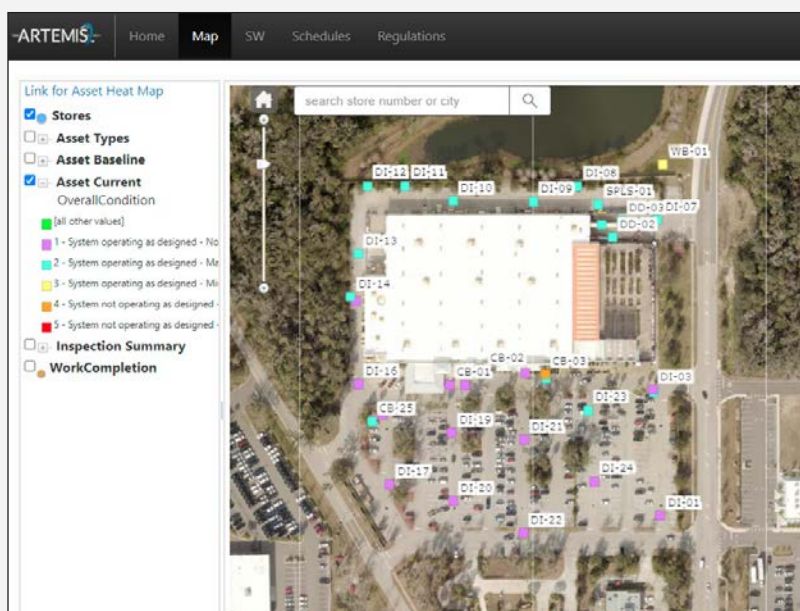
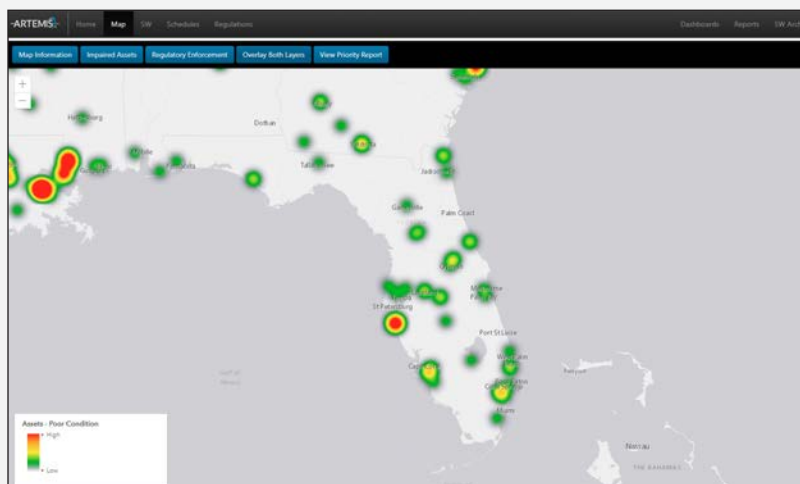
- Asset Management
- Water
- Air
- Health and Safety
- Industrial Hygiene
- Sustainability and ESG
- Sample Management

Additional Benefits

- Eliminates data entry redundancy
- Accelerates field to office reporting
- Enforces data integrity
- Centralizes all aspects of our program/projects
- Offers tailored reporting and exports
- Offers statistical metrics on data collected
- Configurable interface and dashboard
- Provides real-time status across environmental assets

Industries Currently Supported

- Energy
- E-Commerce and Retail
- Food and Beverage
- Industrial/Manufacturing
- Public Sector
- Real Estate and Financial Services
- Telecommunications
- Transportation and Logistics



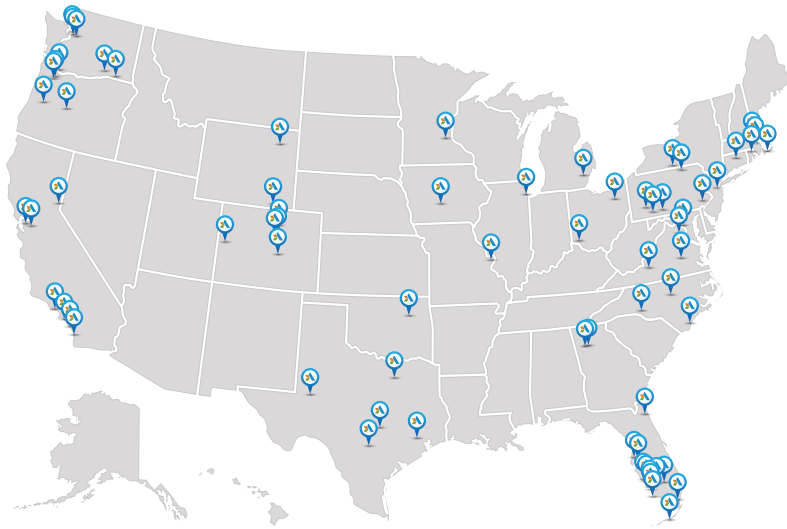


National Presence. Local Expertise.

America's Leading Businesses Turn to Apex

Established in 1988, Apex is a national multidisciplinary consulting and engineering services firm with a robust portfolio of capabilities in water; environment; environmental, social, and governance (ESG) and resiliency; health and safety; compliance and assurance; and infrastructure. Rated #13 as an *ENR* All-Environmental firm and #68 in the top 200 overall, we are known for our technical expertise, rapid response, operational integrity, and exceptional client satisfaction. We operate in all 50 states and maintain a highly capable and diverse team of scientists, geologists, engineers, technicians, and information management specialists.

For more than 30 years, Apex has delivered an extensive platform of services to a broad mix of private and public sector clients—from energy companies, manufacturers, retailers, and real estate developers to insurance companies and municipal governments. Across industries and markets, Apex meets environmental challenges with strong technical resources; professional depth in scientific and engineering disciplines; and superb, cost-efficient project management.



Sectors We Serve

- Aerospace and Aviation
- Education
- Energy
- E-Commerce/Retail
- Food and Beverage
- Healthcare
- Industrial/Manufacturing
- Mineral Resources
- Public Sector
- Real Estate and Financial Services
- Telecommunications
- Transportation and Logistics

Leading the Industry

Company Recognition

- Ranked in the Top 30 All-Environmental Firms by *ENR* Magazine (#12 in 2023)
- Ranked in the Top 200 Environmental Firms by *ENR* Magazine since 1997 (#58 in 2023)
- Continually Ranked as a Zweig Group HOT Firm Winner
- Received the 2024 Business Achievement Award from the *Environmental Business Journal*®

Client Support

- *EPA State Excellence in Supporting Reuse Award* for our 2 Oregon DEQ Superfund site projects
- *Performance Excellence Award* from our confidential aerospace client for delivering stellar service
- *Contractor Safety Circle of Excellence Award* from the Colonial Pipeline Company

Employee Achievement

- *Daily Journal of Commerce's Women of Vision Award* for outstanding industry leadership
- *IEA Associate of the Year Award* for dedication, commitment, and service

