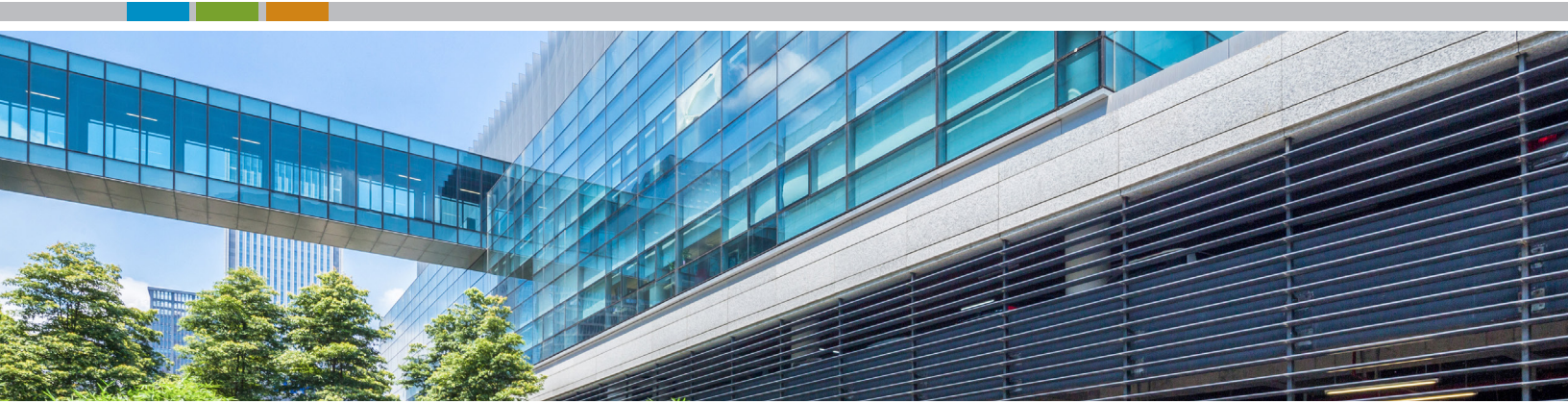


Pragmatic Property Management

From Environmental Exposure to Environmental Excellence



The keys to successful property management are pretty straightforward: an efficiently run asset, high tenancy, and low operating costs. What's foundational to all three, however, is effective environmental, health, and safety (EHS) management.

With it, you can minimize your environmental impact and maximize your building efficiency.

You can buy or sell, renovate or refinance, with a clear peace of mind. You can proactively address overlapping and ever-changing federal, state, and local regulatory requirements and avoid unnecessary costs. You can attract and retain new occupants with innovative stormwater solutions such as rainwater harvesting that yield savings as well as sustainability. You can turn risks into reliability and pressures into profit.

Real estate, as you well know, is riddled with environmental challenges. From mold, asbestos, lead, and indoor air quality to soil and groundwater contamination and hazardous waste. These risks could arise from cleaning fluids, fertilizers, insecticides, or industrial byproducts currently produced, used, or sold by your tenants or from underground storage tanks or former drycleaning solvents historically used by companies who once shared the same space. And unfortunately, even if a property is fine today, it may have problems tomorrow. Consider Legionella outbreaks and flooding from natural disasters. With a strategic focus, however, you can avoid, reduce, or eliminate existing environmental liabilities that may exist now while safeguarding your property against any future risks.

We know. Because, at Apex, we've been supporting companies like yours for 30 years. We solve their challenges quickly and effectively, with a return on their investment, a positive impact to their bottom line or both. And we can do the same for you.

About Apex

Established in 1988, Apex is a national multidisciplinary consulting, engineering, and field services firm with a robust portfolio of capabilities in water resources, environmental services, health & safety, construction management, transportation, and compliance & assurance. We are known for our technical expertise, rapid response, operational integrity, and exceptional client satisfaction. We operate in all 50 states and maintain a highly capable and diverse team of scientists, engineers, technicians, and information management specialists.

Our award-winning services span due diligence; regulatory compliance; EHS risk management; multi-media environmental assessment, permitting and remediation; and water resource management. We pair these with sustainable/renewable solutions to reduce water and energy consumption and increase efficiency.

www.apexc.com



Representative Services—National Presence, Local Expertise

Stormwater Management

- Inspection
- Mapping
- Operations and maintenance
- Notice of Violation (NOV)
- Construction
- Repair/rehabilitation
- Rainwater/gray water harvesting and reuse

Industrial Hygiene and Hazardous Materials Management

- Asbestos and lead-containing materials
- Legionella detection and exposure mitigation
- Water management for cooling towers/condensers, spas, fountains, etc.
- Indoor air quality investigations
- Air/dust, mold, and moisture monitoring/management
- Mold prevention

Asset Management

- ARTEMISSM, Apex's environmental information management system
- Real-time asset insight
- Risk identification, mitigation, and monitoring
- Systematic data collection and continuity
- Environmental regulatory compliance
- Document management

Environmental Services

- Due diligence—Phase I and II environmental site assessments
- Property Condition Assessments
- Soil and groundwater remediation/state programs
- Facility decommissioning/decontamination and waste management
- Natural resource management for wetlands, streams, and threatened/endangered species
- Underground/aboveground storage tank evaluations, removals, retrofits, repairs, upgrades, and compliance service
- Stormwater/wastewater/drinking water management
- Permitting and compliance
- Health and safety monitoring

But what we do isn't nearly as important as how we do it. Our 90% referral and repeat business is testament to the fact that we exceed our clients' expectations. Each and every time. And we look forward to doing the same for you.

www.apexc.com

info@apexc.com • (800) 733-2739

